

## Development of Upperair Thailand Cumulus Model (TCM)

Chanti Detyothin, Ministry of Agriculture and Cooperatives, Bangkok, Thailand; and P. Chantraket and A. Nakburee

### Abstract

Thailand weather modification planning, especially rain enhancement, requires reliable daily weather data of upperair indices which is usually measured every morning at 00 UTC using radiosonde. Data from daily radiosonde have been interpreted and used for warm cloud seeding potential forecasting. However, the overall forecasting and instability indices of current using models are still unreliable and unsuitable for each regions of Thailand, due to the variation of topography and climatic difference. Therefore, the study of upperair indices and new model development have been conducted during year 2012 – 2017, to find regional upperair indices for each part of Thailand and develop the better warm cloud seeding models to support the daily rain enhancement activities.

Data from year 2012-2017 are separated into dry (15.Oct – 14.May) and Wet season (15.May – 14.Oct). Upperair data gathering from 5 weather stations of Department of Royal Rainmaking and Agricultural Aviation (DRRAA), had been used as training data to model. Whereas, storm properties derived from DRRAA's 5 weather radar stations and rainfall amount data from rain gauge networks of Thai meteorological department (TMD) and Hydro and Agro Informatics Institute (HAII) installed within each radar measured ranges had been used as observed data for validation (Test data). Correlation coefficient @ statistics is used for upperair indices selection. The statistical comparison of new and old model had been made using skill score of Heidke and Peirce Skill Score (HSS), Peirce Skill Score (PSS), Gandin-Murphy Skill Score (GMSS) and accuracy.

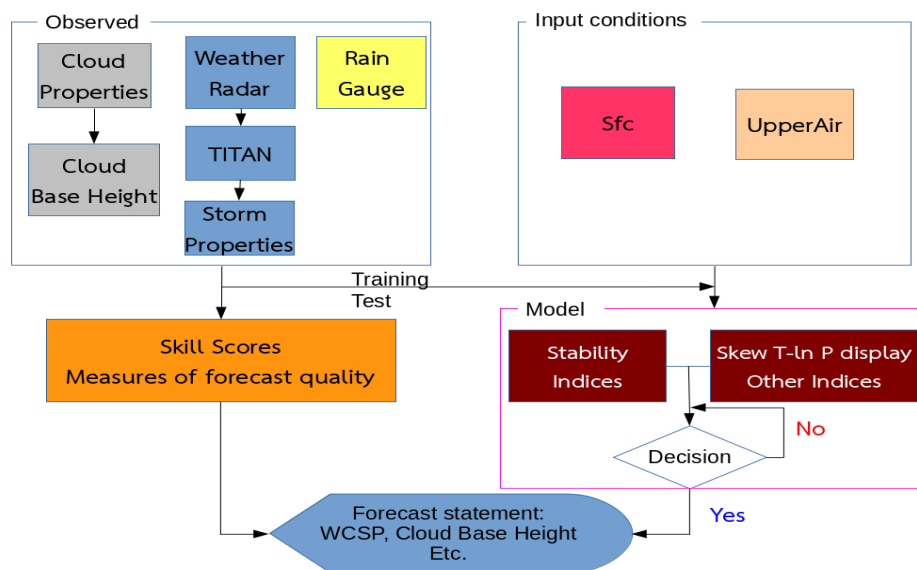
According to results of study, old models have 8 input indices in dry and wet season, upper northern part has 9 input indices in dry season and 9 input indices in wet season, central part has 27 input indices in dry season and 11 input indices in wet season, eastern part has 44 input indices in dry season and 13 input indices in wet season, north eastern part has 20 input indices in dry season and 8 input indices in wet season and south part has 23 input indices in dry season and 26 input indices in wet season. Therefore, the implication upperair indices are difference in each regions and season. Statistical skill score performed between new and old model found out that the percentage of accuracy and scores for each region of new model are higher than old models for every scores and season.

## Introduction

Thailand weather modification planning, especially rain enhancement, requires reliable daily weather data of upperair indices which is usually measured every morning at 00 UTC using radiosonde. Data from daily radiosonde have been interpreted and used for warm cloud seeding potential forecasting. However, the overall forecasting and instability indices of current using models are still unreliable and unsuitable for each regions of Thailand, due to the variation of topography and climatic difference. Therefore, the study of upperair indices and new model development have been conducted during year 2012 – 2017, to find regional upperair indices for each part of Thailand and develop the better warm cloud seeding models to support the daily rain enhancement activities.

## Methodology

Data from year 2012-2017 are separated into dry (15.Oct – 14.May) and Wet season (15.May – 14.Oct). Upperair data gathering from 5 weather stations of Department of Royal Rainmaking and Agricultural Aviation (DRRAA), had been used as training data to model. Whereas, storm properties derived from DRRAA's 5 weather radar stations and rainfall amount data from rain gauge networks of Thai meteorological department (TMD) and Hydro and Agro Informatics Institute (HAI) installed within each radar measured ranges had been used as observed data for validation (Test data). Correlation coefficient (R ) statistics is used for upperair indices selection. The statistical comparison of new and old model had been made using skill score of Heidke and Peirce Skill Score (HSS), Peirce Skill Score (PSS), Gandin-Murphy Skill Score (GMSS) and accuracy.



Conceptual Framework

## Study Area



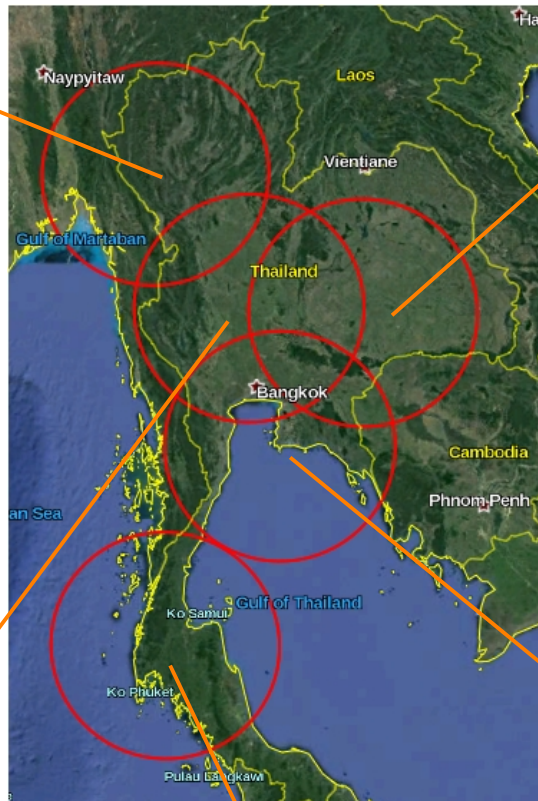
DRRAA radar station,  
Omkoi, Chiangmai



DRRAA radar station, Pimai  
Nakornratchasima



DRRAA radar station,  
Takli, Nakornsawan



DRRAA radar station, Sattahip  
Rayong



DRRAA radar station, Panom,  
Surathani

## Results

**Table 1** : Input Regional Parameters for models

Model	Rainy Season	Dry Season
GPCM(Great Plain Cumulus Model)	8	8
NTCM(Upper North Model)	9	9
CTCM(Central Model)	11	27
ETCM(East Model)	13	44
ITCM(Northeast Model: I=ISAN)	8	20
STCM(South Model)	26	23

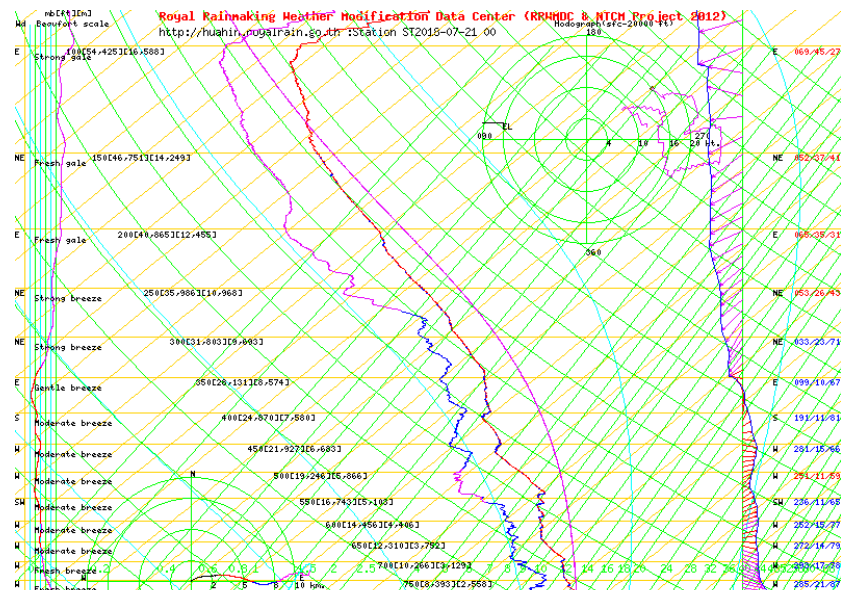
From Table 1, old models have 8 input indices in dry and wet season, upper northern part has 9 input indices in dry season and 9 input indices in wet season, central part has 27 input indices in dry season and 11 input indices in wet season, eastern part has 44 input indices in dry season and 13 input indices in wet season, north eastern part has 20 input indices in dry season and 8 input indices in wet season and south part has 23 input indices in dry season and 26 input indices in wet season. Therefore, the implication upperair indices are difference in each regions and season.

**Table 2** :Forecast accuracy of models in percentage

Season	% of Forecast Accuracy									
	North		Central		Eastern		Northeast		Southern	
	NTCM	GPCM	CTCM	GPCM	ETCM	GPCM	ITCM	GPCM	STCM	GPCM
Dry Season (15Oct-14May)	45.5	66.7	53.3	40.0	43.6	20.0	58.6	20.7	62.9	33.5
Wet Season (15May-14Oct)	39.1	3.1	49.3	27.0	48.8	32.4	54.7	24.0	37.6	41.1

From Table2 shown that Statistical skill score performance between new and old model found out that the percentage of accuracy and scores for each region of new model are higher than old models for every scores and season.

## Conclusions



### Indices Calculate By Northern Thailand Cumulus Model Project (NTCM 2012)

PRECIPITABLE WATER SFC-850	= 2,2 cm
PRECIPITABLE WATER SFC-700	= 3,96 cm
PRECIPITABLE WATER SFC-500	= 5,21 cm
PRECIPITABLE WATER SFC-100	= 5,69 cm
ISOTHERM HEIGHTS 0	= 17501 ft
ISOTHERM HEIGHTS -5	= 19456 ft
ISOTHERM HEIGHTS -10	= 21448 ft
ISOTHERM HEIGHTS -15	= 24204 ft

MEAN MIXING RATIO, LOWEST 25 MB	= 18,8206 g/kg
MEAN MIXING RATIO, LOWEST 50 MB	= 17,7114 g/kg
MEAN MIXING RATIO, LOWEST 100 MB	= 16,1407 g/kg
MEAN MIXING RATIO, LOWEST 150 MB	= 15,3044 g/kg

Eastern Thailand's upperair forecast by ETCM(Sattahip Station)

Warm Cloud Seeding Experimental Day Declaration Criteria

Radar Observation

Variable Forecast= 11

Criteria= MTEM150\_c=22,3144/0,LCL150mbTemp=20,5/-5,SWI850\_600=258,39/-5,SWI800\_600=219,39/-5

Criteria= CAPE925=687/0,Wmax925=37/0,WindSpeed1000\_5000ft=21/-5

Criteria= WindSpeed5000\_10000ft=23/-5,EL925=40543/0,AVGRH10\_18KFT=70,4345/0,WindShear=8,738/-5

Criteria=

Criteria=

Criteria=

Criteria=

Warm Cloud Seeding Potential Point= -30

Warm Cloud Seeding Potential Percent % = 38

**Picture 1** SkewT-lnP and Upperair Indices and WCSP forecast

The models developed from this study have been shown in DRRAA intranet for daily decision making of operation scientists. The model illustrate in 2 sections one is skew T ln P and second part is indices and WCSP forecasting.

## References

- Bernard A. Silverman, Curtis L. Hartzell, William L. Woodley and Daniel Rosenfeld, (1994). "Thailand Applied Atmospheric Resources Research Program Volume 1 – Program Summary and Recommendations". U.S. Department of the Interior, Bureau of Reclamation Denver office Denver CO 80225.
- G. S. Stipanuk, 1991. "Algorithms for generating a Skew – T, Log P diagram and computing selected meteorological quantities". Atmospheric Science Laboratory White Sand Missile Range, New Mexico, 88002.
- M. Dixon and G. Wiener, 1993. "TITAN: Thunderstorm Identification, Tracking, Analysis, and Nowcasting – A Radar-based Methodology". American Meteorology Society 1993. pp. 785-797.